

# 64 Bit MapInfo Upgrade Course

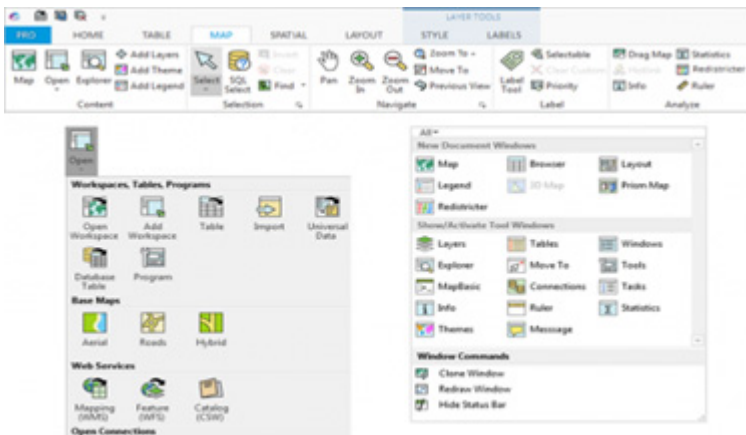
Insight GIS is pleased to announce a 1-day training course in the new MapInfo Pro 64bit (v12 and v15.2). This is a great opportunity to update or improve your skills with the new MapInfo Pro.

To ensure that you can quickly and effectively gain the benefits of the new and enhanced versions - the course has been designed to be

- Short – Duration is 1 day
- Effective - Tailored to specific areas where you will gain the most benefit
- Productive – class sizes will be kept to a minimum of only four attendees per training session. This will increase the interaction between trainees and the trainer.
- Affordable - \$500<sup>ex GST</sup> per attendee

## Topics

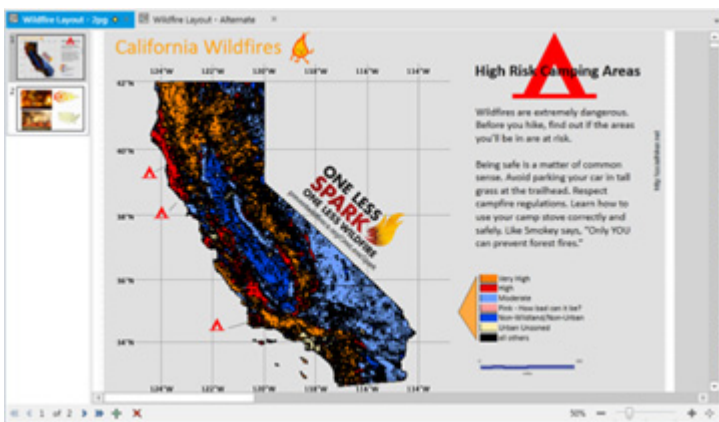
### Interface Changes



Pitney Bowes have redesigned the MapInfo Pro interface to make it more intuitive. This course will allow you to

- Successfully navigate the redesigned ribbon based menu.
- Reduce the clicks to apply MapInfo functions and tools.
- Understand the use of quick access toolbar and mini toolbar
- Utilise one click label changes

### Layout Designer



The layout designer improves cartographic output and enables you to prepare professional looking maps easier and faster. The course will cover

- Working with the Layout Designer
  - Renaming layers and thematics
  - Multiple page support
- Working with frames
- Inserting and copying objects
  - Text
  - Points/line/polygons
  - Images and logos
- Legends and scale bars
- Working with guides and grids

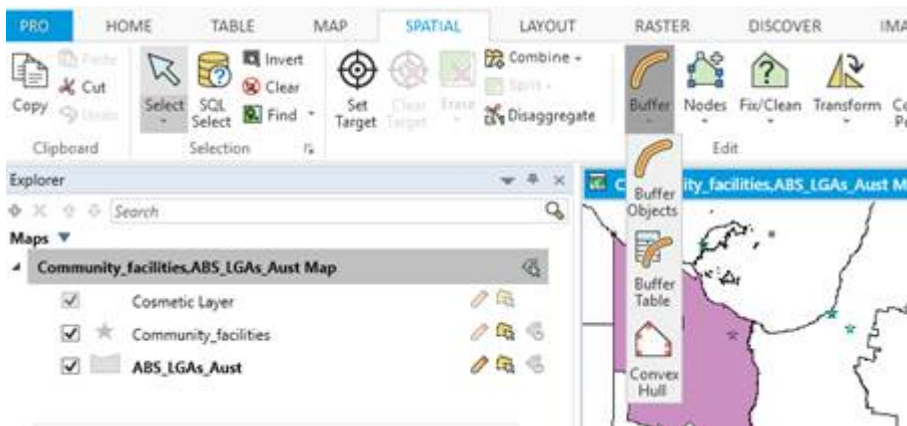
## Workspace Explorer



Work with maps, tables and windows in an easier and more efficient way. Included within this topic

- Window management
  - Working with floating, dockable and tabbed modes
  - Layer Management
  - Right Click Options
- Map management
  - Visible, Selectable, Editable & Label Options
  - Layer Properties
  - Style Override
  - Zoom layering
  - Label Display and Rules

## Commonly Used Features



Look at how MapInfo Pro 64bit handles daily functions such as

- Queries
- Spatial Editing
- Buffers
- Thematic Maps
- Hotlinks
- Data Creation

## Enrol Now

Please go to our website or contact the staff and Insight GIS for further information and course dates.

**Contact Insight GIS for more information or to book your MapInfo Training Course today**

Phone: (03) 6234 5833  
Email: [info@insightgis.com.au](mailto:info@insightgis.com.au)  
Website: [www.insightgis.com.au](http://www.insightgis.com.au)  
Address: 2 Gregory Street, Sandy Bay TAS 7005