

PRODUCT DATA SHEET

MapInfo® Exponare®

MAPINFO EXPONARE IS A CONFIGURABLE MAP DRIVEN APPLICATION THAT PROVIDES A SIMPLE, POINT-AND-CLICK PORTAL INTO YOUR CORPORATE DATA FOR INTERNAL AND EXTERNAL CUSTOMERS

Product Overview

MapInfo® Exponare® is an enterprise location intelligence solution which provides a means to access data within an organisation irrespective of its format (spatial or non-spatial). It integrates with relevant corporate applications and can be configured to suit a wide variety of users both inside and outside the organisation.

MapInfo Exponare is architected around a central web server which provides data and functionality to two user deployments, Exponare Enquiry and Exponare Public, to meet the needs of various user types.

Part of the MapInfo suite of products, Exponare provides a highly visual portal that makes corporate data more meaningful for analysis and decision making.

Benefits

MapInfo Exponare is...Configurable

The intuitive Configuration Manager provides administrators with a great deal of flexibility, without the need to write code. Administrators can configure user profiles to determine the functionality, data sets, queries, views, print templates and application links that each user or group of users can access. Exponare can be administered by a single administrator or group of administrators, all saving their changes simultaneously.

MapInfo Exponare is...Scalable

Exponare can be configured to run in a network load balanced environment. Increase in usage demand can be met effectively by increasing the available capacity in the server farm.

MapInfo Exponare is...Intuitive

The intuitive nature of Exponare's interface means that users of varying skill levels and experience can be made operational very quickly. Data sets, queries, print templates and map views are pre-configured by the administrator to make it quick and easy for users to access and analyse data.

EXPECTED ROI

- Rapid deployment and quick return on investment
- Predefined queries, print templates, work contexts and application links improve ease of use
- Network load balanced deployments can grow to meet demand
- Live access to corporate data ensures the latest information is always used
- Point-and-Click interface extends location based data to all levels of the organisation
- Exponare integrates with other business applications to maintain continuity of business processes.

MapInfo Exponare is...Powerful

Exponare provides a range of capabilities out of the box such as printing, thematics, queries, mail merge, redlining, favourites, views, application level linking, editing of attribute data and a range of mapping tools (zooming, selections, measuring distances, etc). The administrator can give users as much or as little functionality as required.

MapInfo Exponare is...An Information Portal

Exponare provides a map-based portal into an organisation's data, both spatial and non-spatial. Data is accessed where it lives so there is no need for duplication. A user can view all the information associated with a map object, regardless of where the data is stored (MapInfo tables, SQL Server, Oracle, Access, etc). Exponare can also link to third party applications, such as property and rating systems, to provide a seamless interface to all relevant information within an organisation. Exponare Public can be used to provide information to customers and citizens directly via the web.

Added Value

What's New in MapInfo Exponare 5.5?

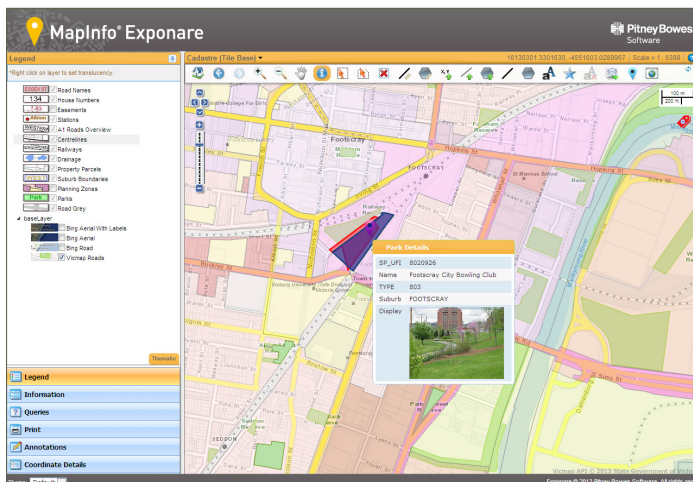
Recent releases of MapInfo Exponare have resulted in a redesigned user interface for Exponare Enquiry with ribbon toolbar, redesigned panels and quick access toolbar; a new public interface with dockable panels, drag and drop layer reordering and transparency slider for each layer; and a new mobile interface suitable for iPads and iPhones.

MapInfo Exponare 5.5 expands on these areas with more capabilities added to the Rest Public interface including user permissions, public invoker, scaled printing, layer groups, usability improvements and much more. Annotations in Enquiry have also been improved with the ability to edit annotations, set default styles, and set transparent backgrounds. The mobile interface has been enhanced with the addition of a GeoLocate feature to track your current location whilst on the move.

PRODUCT DATA SHEET

PRODUCT UPDATES

- **Enquiry Update**
Annotation improvements, support for Word 2010 print templates, Previous and Next buttons for viewing query results, support for mouse scroll wheel panning, and more.
- **Rest Public Updates**
Support for style overrides, thematics, user permissions, scaled printing, Public invoker, icon configuration, layer groups, label improvements, performance and usability improvements, and more.
- **New Public User Interface**
New GeoLocate feature to track the current location from the mobile device, support for authentication.



The newly designed interface for Exponare Public makes it even easier for users to navigate the site and find the information they need.

Specifications

- Support for SQL Server 2012
- Support for Oracle 10g and 11g
- Exponare Enquiry support for Windows XP, 7 and 8
- Exponare server support for Windows 2003 and 2008 Server 64 bit
- Support for Internet Explorer 8.0, 9.0 and 10, and latest versions of Firefox and Google Chrome

For more information call 02.9437.6255 or visit us online: www.pitneybowes.com.au/software

ASIA PACIFIC/AUSTRALIA

+61.2.9437.6255

pbsoftware.australia@pb.com

pbsoftware.singapore@pb.com

UNITED STATES

+1.800.327.8627

pbsoftware.sales@pb.com

EUROPE/UNITED KINGDOM

+44.800.840.0001

pbsoftware.emea@pb.com

INDIA

+91.120.402.6000

pbsoftware.india@pb.com

 **Pitney Bowes**
Software

Every connection is a new opportunity™



Pitney Bowes Software Inc. is a wholly-owned subsidiary of Pitney Bowes Inc. Pitney Bowes, the Corporate logo, MapInfo Exponare and MapInfo Manager are [registered] trademarks of Pitney Bowes Inc. or a subsidiary. All other trademarks are the property of their respective owners. © 2013 Pitney Bowes Software Inc. All rights reserved.

93716 APAC 1311 DS