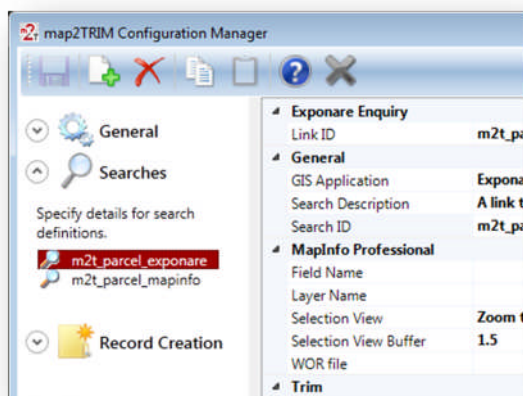


Link your most important information systems

What is map2TRIM?

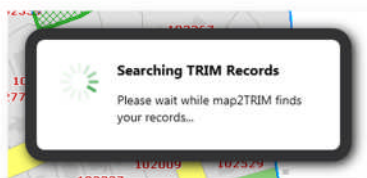
map2TRIM is a powerful tool that integrates two of your most important information systems: the document management system and the geographic information system.

Developed by Insight GIS, map2TRIM provides easy and efficient access to information. It combines the benefits of documents, records and image management with location based intelligence.

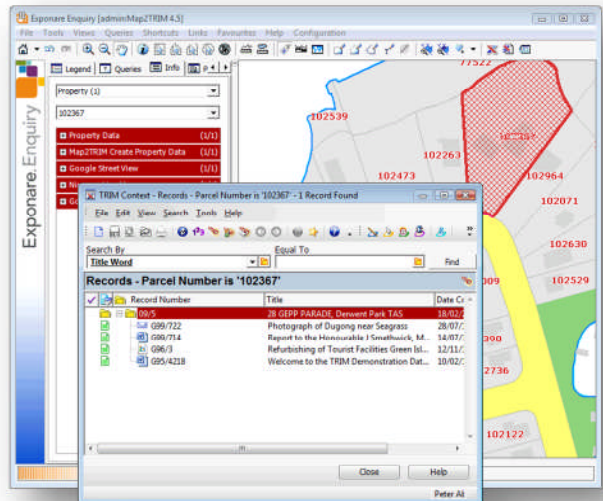


The map2TRIM middleware is built around MapInfo Professional, Exponare Enquiry and HP's TRIM Context and Captura systems. It provides a simple but powerful link between your organisation's documents and their geographic location.

A critical issue for Local Governments is how well your information systems "speak" to each other.



With map2TRIM, you gain seamless integration between your GIS and the TRIM document management system, making life easier for you and your organization.



Benefits of map2TRIM

- ▶ Locate and visualize your TRIM documents on a map directly in MapInfo or Exponare.
- ▶ Reveal TRIM documents relating to any geographic objects (such as properties, assets, crime scenes, etc.).
- ▶ Optionally, create new TRIM records straight from MapInfo/Exponare and populate the record with information that's already carried in the GIS.

Features of map2TRIM

- ▶ Provides a bi-directional link between the TRIM Client and MapInfo/Exponare.
- ▶ Support for both 32bit and 64bit TRIM Client.
- ▶ Very easy to use, point-and-click functionality.
- ▶ From MapInfo/Exponare, retrieve TRIM documents for any asset by selecting one or more map objects and then pressing the map2TRIM button.
- ▶ From TRIM, visualise the geographic location of any document by right-clicking on it and selecting the map2TRIM link option. It's that easy!