

# Map2TRIM

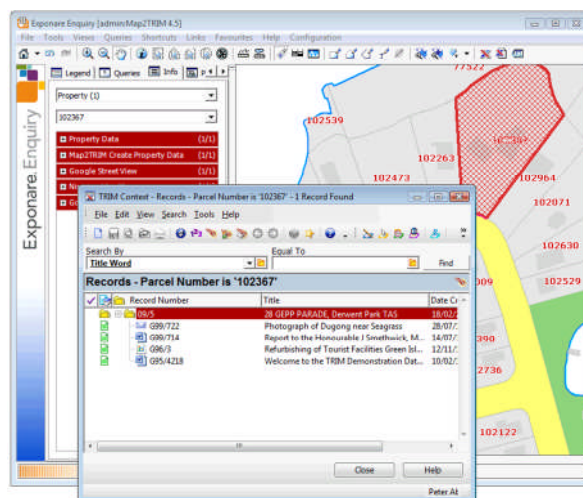
**Link your most important information systems**

## What is Map2TRIM?

Map2TRIM is a powerful tool that integrates two of your most important information systems: the document management system and the geographic information system.

Map2TRIM is developed by Insight GIS and provides easy and efficient access to information. It combines the benefits of document, records, content and image management with location based intelligence.

Map2TRIM is built around MapInfo Professional, Exponare Enquiry and HP's Context and Captura systems. It provides a simple but powerful link between your organisation's documents and their geographic location.

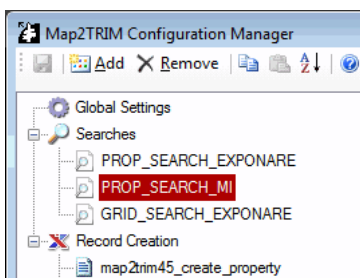


## Benefits of Map2TRIM

- ▶ Locate and visualize TRIM documents on the map based on a common identifier (e.g. property number, asset number, street address, etc.).
- ▶ Reveal TRIM documents relating to any geographic object (such as properties, assets, crime scenes, etc.).
- ▶ Optionally, create new TRIM records straight from MapInfo/Exponare and populate the record with information that's already carried in the GIS.

## Features of Map2TRIM

- ▶ The application is a bi-directional link that works between TRIM and either MapInfo Professional or Exponare Enquiry.
- ▶ Once setup, it is extremely easy to use with point-and-click functionality.
- ▶ From MapInfo / Exponare, you can easily retrieve related TRIM documents for any asset by simply clicking on the map object and pressing the Map2TRIM button in the toolbar.
- ▶ From TRIM, you can visualise the geographic location of a document by simply selecting a record in TRIM and pressing the External Link button. It's that easy!



*A critical issue for Local Governments is how well your information systems "speak" to each other.*

*With Map2TRIM, you gain seamless integration between your GIS and the TRIM document management system, making life easier for you and your organization.*